

 ***Westmatic***



Your Specialist in Heavy Vehicle Wash Systems.



 **Westmatic**

Your Specialist in Heavy Vehicle Wash Systems.

mail@westmatic.com www.westmatic.com

Since 1974, Westmatic Corporation has manufactured, installed and serviced equipment in over 2000 large vehicle wash bays worldwide. In doing so, it has developed a reputation as a company that builds the highest quality, most innovative wash equipment in the industry, manufactured according to ISO 9001 and the environmental standards of ISO 14001. Westmatic's state-of-the-art line of wash equipment is supported throughout North America by factory-trained technicians. Our mission is to provide and support the very best in environmentally friendly, effective and cost-efficient large vehicle wash equipment in the world. Welcome to the world of Westmatic!



www.westmatic.com

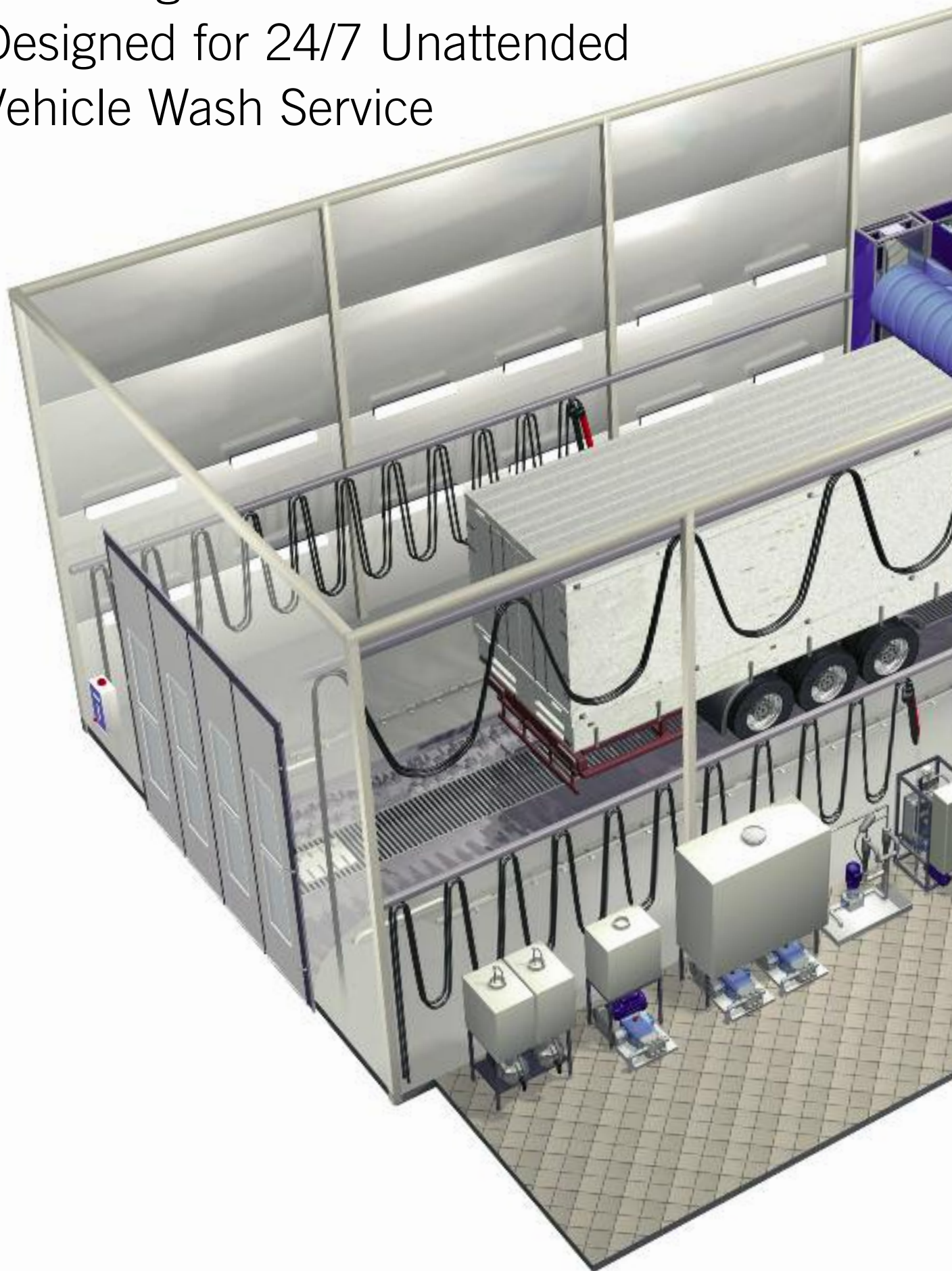


ARABUSS SWEDE

SETRA

JOG 884

Fully Automated Heavy Duty Retail Truck Wash System
Featuring the Wash Control 3000
Designed for 24/7 Unattended
Vehicle Wash Service



System



 **Westmatic**

HEAVY DUTY

**Westmatic**

**Westmatic**



Truck Wash/Bus Wash.

Westmatic HEAVY DUTY Combination Rollover

The “Heavy Duty” is the most versatile vehicle wash system in the world. It washes with brushes, in a touchless mode, or in a combination making it capable of effectively washing an entire fleet of different types of vehicles, from automobiles and pick-up trucks to tractor-trailers and tanker trucks, dump trucks, buses, public safety and heavy equipment.

This machine is perfect for firms or municipalities that need to accommodate all types of vehicles or various types of vehicles it operates.

This single machine can satisfy the wash needs of various city departments, including Public Works, School, Parks & Recreation, Water and Public Safety. It can be installed in a drive-through bay or in a “drive-in, back-out” bay.

The “Heavy Duty” is truly versatile and the perfect solution for a profitable retail wash facility.

Standard Features

- > Hot-dipped galvanized frame
- > Three brush configuration with high-density brushes
- > “Mirror Protection” System
- > High Pressure Pump
- > Pre-Soak Arch
- > PLC Control
- > Variable Frequency Drive
- > Vehicle Sizing System

Optional Equipment

- > High-pressure chassis wash system
- > Water recycling and/or purification systems
- > Blower systems
- > Manual spray detail system
- > Two-step cleaning process
- > Overhead rail drive
- > Drive-Through package for a high volume of vehicles



Overlapping front and rear wash (Standard on all Westmatic machines).



Under Carriage and Side Spray (Optional).



Picture 3: Overhead Crane Mounted Heavy Duty (Optional).

Bus/Truck Wash.

Westmatic MULTIWASH Rollover

The Westmatic "Multiwash" is the ideal machine for public or private fleets where brushes can be safely and effectively clean many different types of vehicles.

It is ideally suited for tractor-trailers, straight trucks, bay trucks, motor coaches, school buses and vans among many others.

This "Rollover" machine thoroughly washes the vehicle using a top brush and side brushes, working around mirrors and other protruding vehicle parts. It can be installed in many existing spaces and when coupled with a chassis wash, will cost-effectively clean and maintain fleets of many vehicle types.

Standard Features

- > Hot-dipped galvanized frame > Three brush configuration with high-density brushes
- > "Mirror Protection" System > PLC Control
- > Variable Frequency Drive > Vehicle Sizing System

Optional Equipment

- > High-pressure chassis wash system > Water recycling and/or purification systems > Blower systems
- > Manual spray detail system > Two-step cleaning process > Overhead rail drive
- > Drive-Through Package for a high volume of vehicles



Multiwash as a truck wash.



Multiwash as a bus wash.



"Mirror Protection Program" (Standard on all Westmatic machines). Washes around the mirrors to prevent damage.

MULTIWASH

Westmatic

Westmatic

SCHOOL BUS
EMERGENCY EXIT

STOP WHEN RED LIGHTS FLASH

20342

194784

Amiron RE

COMPACT


Westmatic


Westmatic

SWEDEN

VÄMT

61



Westmatic COMPACT Drive Through

Westmatic's state of the art drive-through wash systems combines an ultra compact design along with a revolutionary operational concept.

Uses an average of 50% less water than any other drive-through system in the market with the same quantity of brushes. Delivers safe, repeatable and consistent results by precisely controlling of all aspects of the wash. Comes with the industry exclusive "Westmatic Mirror Protection Program".

Unlike other drive-through systems, driver judgment is not an issue while travelling through the wash. By simply following a traffic light, the driver is guided through the entire wash process.

The quality of the front and rear wash does not depend on the speed of the vehicle. Instead of bringing the vehicle to the brushes, we bring the brushes to the vehicle.

While stopped, the front and the rear of the vehicle are completely cleaned using our industry exclusive overlapping brush movements. These systems are equipped with the latest PLC-technology, incorporating highly advanced programming and electronics. All aspects of the wash process are constantly monitored and adjusted, providing the safest, most efficient and thorough wash result of any machine in the world.

With all of this sophistication, these machines remain very simple to operate and maintain, requiring less than 30 minutes of preventive maintenance and mechanical adjustments per month.

Optional Equipment



- > Water recycling with ozone generator > Chassis/wheel wash with high pressure > High Pressure Arch (Touchless) Splash guards > Roof mop > Manual spray equipment
- > Water purification system - "Renaren"> Self-service System "Wash Control 3000"
- > Spot reduction systems > Interior cleaning equipment such as vacuums etc. > Blower systems



Compact 4-brush.



Compact 6-brush.



Compact 2-brush.

Specialized Wash / Touchless.

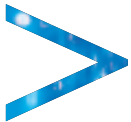
Westmatic SUPER Gantry

The "Super" is a specialized system for washing very large vehicles such as those found in construction and mining. This system automatically reads the contours of the vehicle and the various washing stages are performed by means of a PLC control. Contour reading permits the Westmatic's Super to wash smaller vehicles, problem free. The Westmatic Super is available with 3 brushes, as a touch-free high pressure spraying machine, or as a combination machine equipped with brushes, as well as high pressure spraying. The Westmatic Super can also wash containers. In this version it is equipped with 3 brushes for horizontal washing.

Westmatic TORNADO Touchless Gantry or Drive-through

Tornado is a touchless system for large vehicles such as garbage trucks and odd shaped equipment such as utility vehicles or boom trucks.

Optional Equipment



- > Water recycling system with ozone generator
- > Detergent arches, detergent pumps, detergent mixers
- > High pressure arches and pumps
- > Chassis wash/side spray with high pressure
- > Manual spray equipment
- > Water purification system – "Renaren"
- > Self-service System Wash Control 3000
- > Interior cleaning equipment – vacuums etc



Super with contour reading high pressure arches.



Combat vehicle wash.



Equipment room.

SUPER 6000

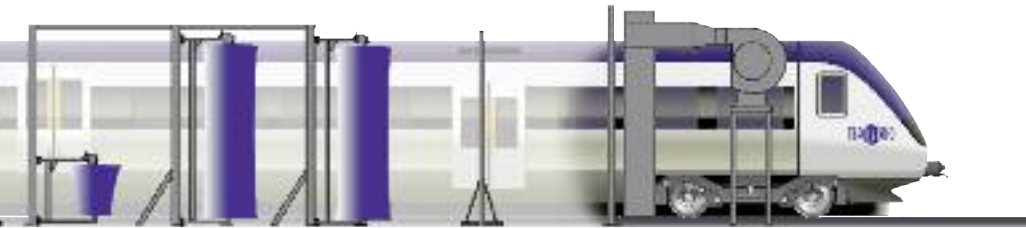
 **Westmatic**

 **Westmatic**





Train Wash.



Westmatic Twin Line

Washing trains can be very complicated but with the Westmatic Twin Line it's easy. These highly technological machines sense the shape of the different rail cars and wash in both directions. The Twin Line's high-density brushes are profiled to match the train's contour and can wash the front, roof and rear in a single wash cycle. To optimize the wash result the wash system can be delivered with dryer/blowers and window squeegees. Westmatic also has systems for identification and registration of trains. Westmatic's train wash equipment is available for both electric and diesel trains and has minimal installation dimension requirements.

Optional Equipment



- > Heating/Cooling arches > Oxalic Acid/ Detergent arches, detergent pumps, detergent metering systems
- > High pressure arches and pumps > Chassis wash/side spray with high pressure
- > Dryer/Blowers with window squeegees > Manual spray equipment
- > Water recycling system with ozone generator > Water purification system – “Renaren”



Twin Line side brushes.



Registration system.



Skirt brushes.

REMARREN



Environmentally-Friendly Water Resource Solutions.

Water Recycling – Stage 1

Water recycling and re-use is both environmentally and fiscally beneficial and therefore is an increasingly important component of any modern vehicle wash system. Westmatics' proven water reclamation system utilizes cyclonic separation to achieve water quality of 10 microns.

Odor control is achieved by use of Ozone injection, which safely and effectively eliminates any odor-causing bacteria in the system as well as accelerating solids precipitation.

This process enables water reclamation of up to 85%, greatly reducing sewer impact fees as well as monthly bills. For decades, Westmatic has been producing effective, cost efficient reclaim equipment that has met the stringent requirements of the Swedish National Environmental Protection Agency and in accordance with ISO14001 standards.



WWR-165-Compact with ozone generator (44 GPM).



Ozone generator.

Environmental thinking does not have to be difficult – this is proven by Westmatic's brilliant water treatment system. The water from the wash is purified in two stages – water recycling and water purification. Westmatic's water treatment system entirely fulfills even the strictest of regulations regarding water quality standards including the rules of the Swedish National Environmental Protection Agency, which are among the most stringent in the world. All parts like the hydro cyclone system, the ozone generator as well as "Renaren" can be delivered separately.

Water Purification

In applications where waste wash water must be purified, Westmatic's "Renaren" system is the answer. Water that is not recycled passes through the oil/water separator and into "Renaren". The method is based on electro flocculation which is a technical combination of electro flotation and electro precipitation. No chemical supplements whatsoever are needed during the whole purification process.



"Renaren" is so effective that it can reach a purification level of more than 99%. After having gone through the "Renaren", the water can then proceed out into the sewage system.

"Renaren" has proved to be useful in many lines of business where purification of oil-mixed water can occur. It is patent protected and has been DNV certified for ship installations.

Reactor unit for "Renaren".



WWR-300 (80GPM).



WASH CONTROL
3000



24/7 Unattended Vehicle Wash Service.

Wash Control 3000

Any model of Westmatics' vehicle automated and manual wash equipment can be coupled with the "Wash Control 3000" card reader system to create a highly profitable and dependable retail wash bay.

The vehicle can enter the bay after the driver swipes a proprietary "wash" card. At the "Wash Control 3000" console the driver selects from a menu of both manual or automated wash programs, then all of the selections are billed. Once the automated wash program is complete, the exit door opens and the vehicle departs.

The bay is now ready for the next wash.

The entire process is extremely user-friendly, eliminating the need for personnel to operate the wash equipment.



Wash Control 3000
makes the wash
accessible day and
night without manning.





Optional Equipment.



Manual Spray Equipment

Westmatic's manual spray equipment can be delivered as a separate unit or as complement to any of our automatic wash systems for an even better wash result. The spray guns are ergonomically designed with high reliability and are manufactured for distributing water, shampoo and degreaser. The manual spray equipment can be mounted on trolleys as a festoon system on each side of the wash bay or in combination with hose reels. In other words, everything you need for attaining the best possible access to all vehicle surfaces.

Turnkey

Westmatic and its' team of exclusive distributors throughout the World also offer design and engineering services to ensure the successful construction of a modern, efficient and dependable large vehicle wash facility.

Interior Cleaning Equipment

For interior cleaning, Westmatic has complete solutions with practical equipment designed specifically for large vehicles.

CAT Pumps

Westmatic uses high pressure pumps from CAT Pumps. This is not accidental. The reliability and quality of the world leading CAT Pumps fit perfectly with Westmatic's requirements for washing equipment. The pumps with nine lives!



CAT Pumps – World Leader
In Triplex High Pressure Pumps.





 **MULTIWASH**

 **HEAVY DUTY**

MULTIWASH

 **Westmatic**
The world's leading manufacturer of industrial washing machines
www.westmatic.com

Westmatic



Westmatic Production

All design/construction, development and manufacturing are assembled under one roof which provides a great advantage in delivery time and customization of the equipment. Westmatic is the leader in the heavy vehicle wash equipment market. We are proud to offer the widest range of heavy vehicle wash equipment in the market.

All our machines are custom designed for your specific wash requirements and backed by Westmatic's factory trained technicians.

Over 2000 wash bays around the world have Westmatic equipment installed.

Westmatic also offers solutions for older wash bays.



Westmatic.



Service is Important

Westmatic has a wide service network with factory trained personnel available 24/7. Our own design and manufacturing gives you as a customer a great advantage regarding product knowledge and parts availability. Westmatic's service vehicles are fully equipped with parts and tools so that we can repair your wash system on our first visit. With a customized service agreement your equipment will be serviced at regular intervals. This provides extra security against downtime.

Parts Availability

Westmatic's new state-of-the-art warehouse has the widest range of parts on the market, with over 7000 different parts for heavy vehicle wash systems. Our warehouse is linked to our business system allowing for quick answers and fast deliveries. 90% of all part orders are shipped out the same day. We know that downtime on wash systems costs money so you should not have to wait for parts.